

## AZO lump breaker type KBW 500 Q cubic design with roll crusher tool

**Sturdy design for very large lumps**

**Gentle crushing**

**Easy to clean**

### Preferred applications

The unit is used for crushing and milling bulk materials with a tendency to form agglomerates, clods and lumps.

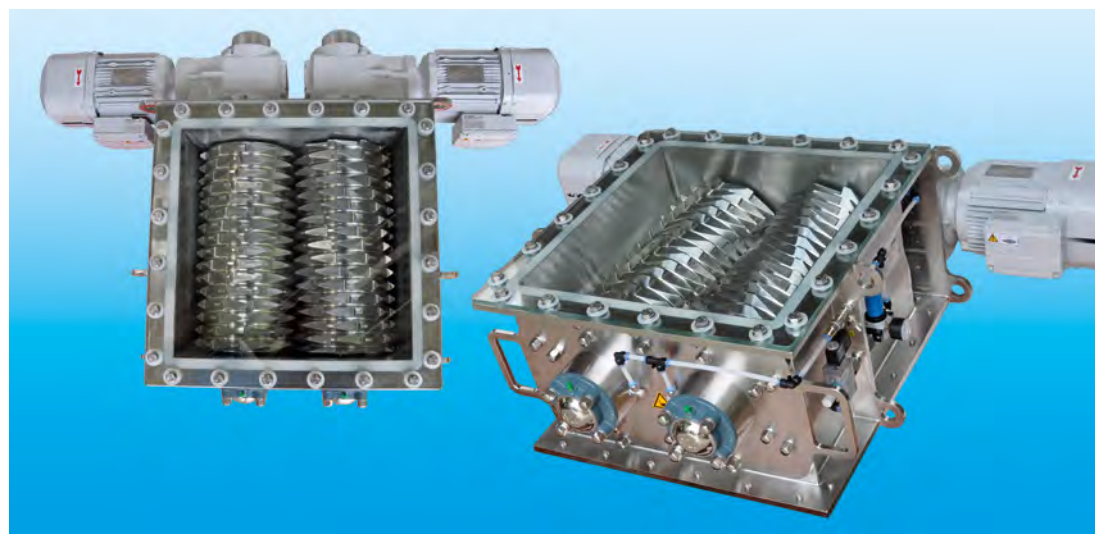
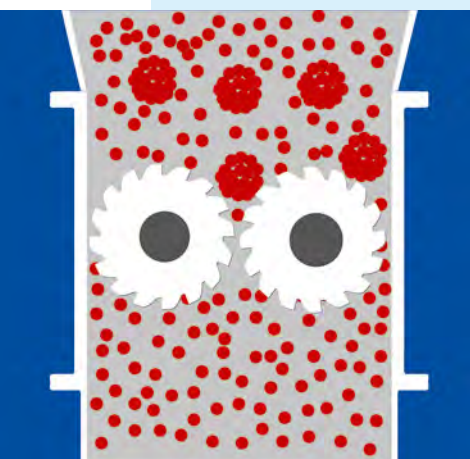
### Special advantages

The robust design of the lump breaker allows lumps such as those formed during storage in big bags or in sacks to be broken up. The counter-rotating roll crusher tools ensure reliable dispersion of the agglomerates. There are no additional internal fixtures like screens and mesh, which makes cleaning easier.

### Design

The AZO lump breaker comprises a robust housing with inlet and outlet flange, two roll crusher tools (sawtooth or pyramid form) and two lateral gear motors. When it comes to the material, there is a choice between material no. 1.4301 and 1.4404 in various surface finishings including electrolytic polish.

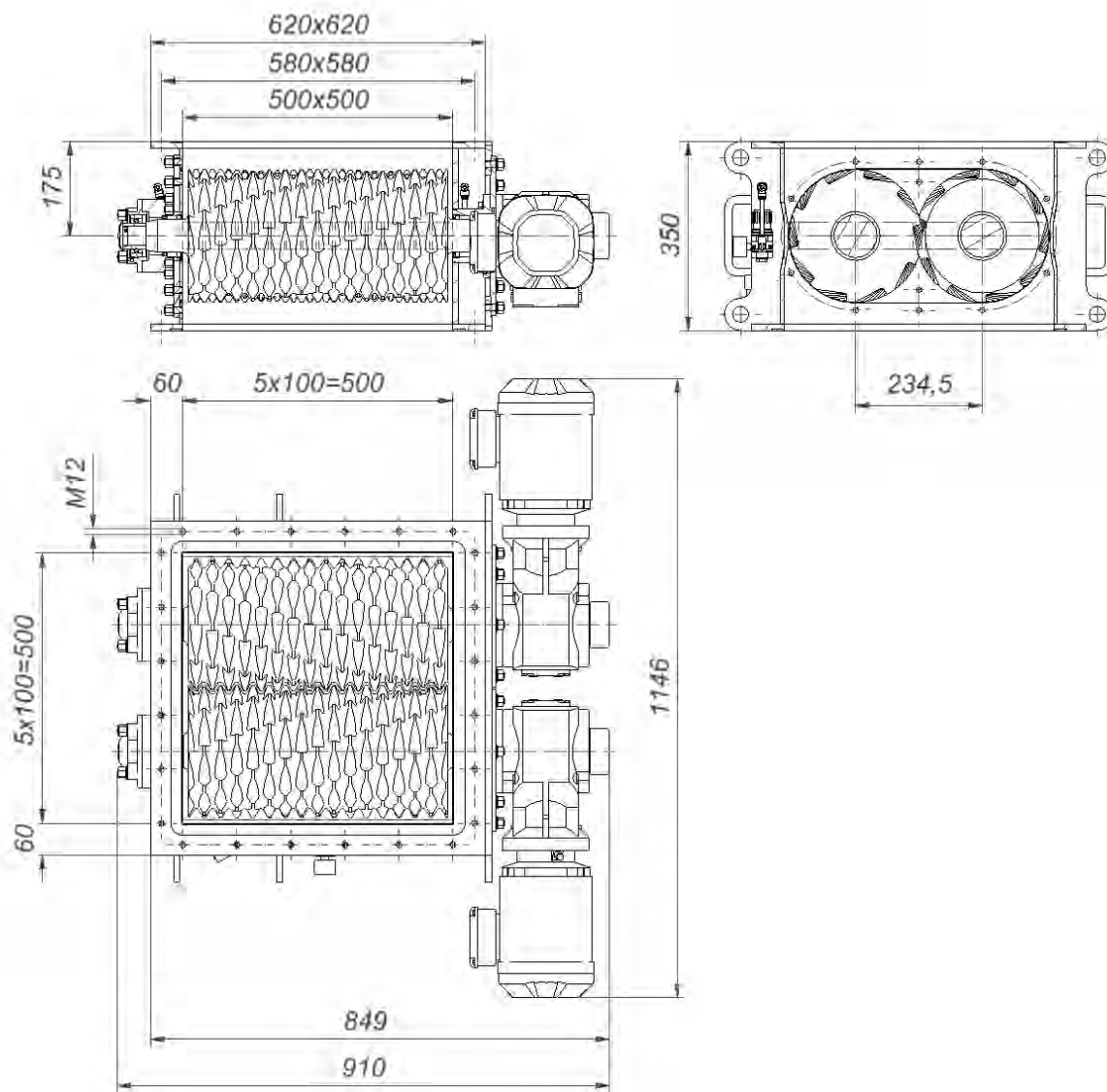
## THE INNOVATION



### How it works

Bulk solids with agglomerates, lumps and caking are fed to the AZO lump breaker over the inlet. The product is seized by two counter-rotating roll crusher tools, broken up and transferred to the next process. Both rolls are designed so that the maximum particle size can be obtained without using an additional screen. The lump breaker can be cleaned in a dry or wet state in accordance with hygiene level 1 (EN ISO 14159).

## Technical data



### Lump breaker type KBW 500 Q:

Mounting position: horizontal  
 Weight: approx. 500 kg  
 Lump size: max. 300 x 400 x 485 mm

### Drive

Drive speed: 52 rpm (50 Hz)  
 Output: 2 x 1.5 kW

### Construction material data:

Available with the materials 1.4301 or 1.4404 and various surface finishings including electrolytic polish.